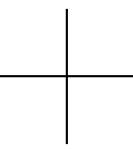




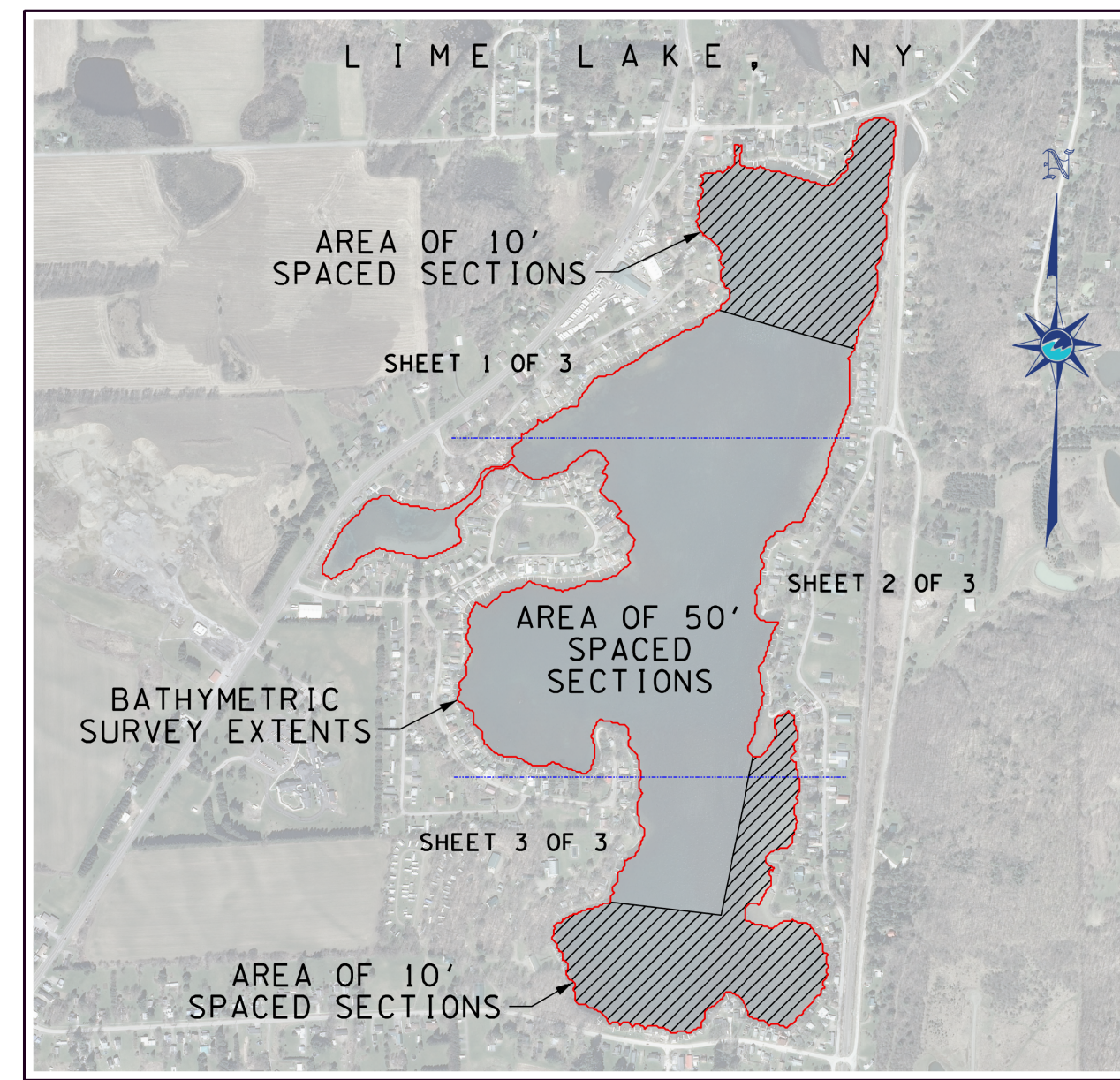
N 886800



E 1175600

E 1176600

E 1177600



LOCATION MAP
NOT TO SCALE

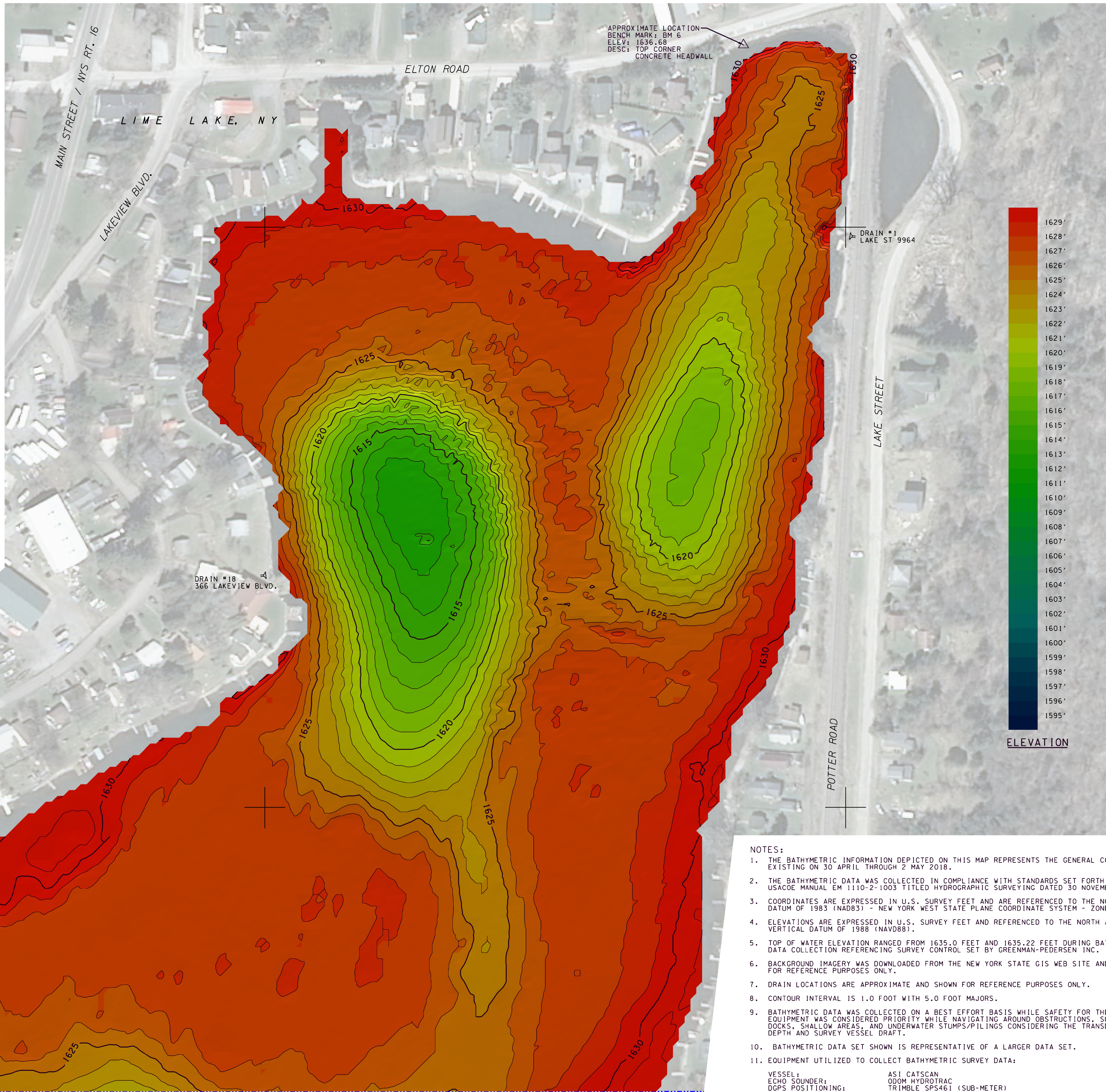
N 885800



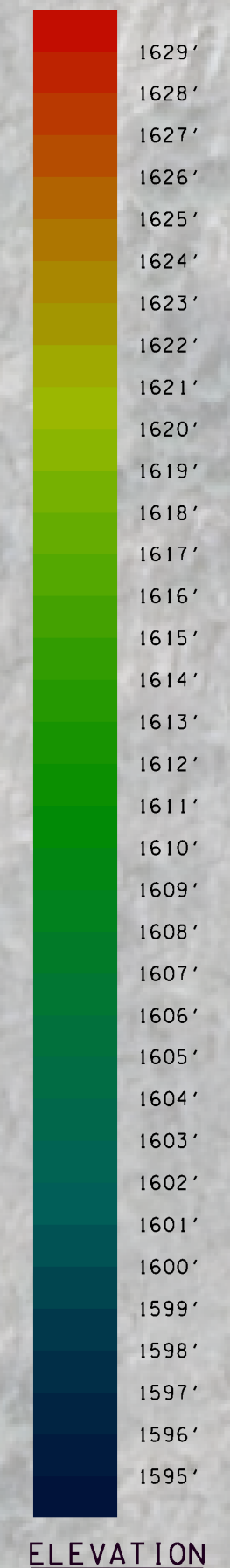
E 1175600

E 1176600

E 1177600



APPROXIMATE LOCATION
BENCH MARK: BM 6
ELEV: 1636.68
DESC: TOP CORNER
CONCRETE HEADWALL



ELEVATION

MATCHLINE - SEE SHEET 2 OF 3

- NOTES:
1. THE BATHYMETRIC INFORMATION DEPICTED ON THIS MAP REPRESENTS THE GENERAL CONDITION EXISTING ON 30 APRIL THROUGH 2 MAY 2018.
 2. THE BATHYMETRIC DATA WAS COLLECTED IN COMPLIANCE WITH STANDARDS SET FORTH IN USACE MANUAL EM 1110-2-1003 TITLED HYDROGRAPHIC SURVEYING DATED 30 NOVEMBER 2013.
 3. COORDINATES ARE EXPRESSED IN U.S. SURVEY FEET AND ARE REFERENCED TO THE NORTH AMERICAN DATUM OF 1983 (NAD83) - NEW YORK WEST STATE PLANE COORDINATE SYSTEM - ZONE 3103.
 4. ELEVATIONS ARE EXPRESSED IN U.S. SURVEY FEET AND REFERENCED TO THE NORTH AMERICAN VERTICAL DATUM OF 1988 (NAVD88).
 5. TOP OF WATER ELEVATION RANGED FROM 1635.0 FEET AND 1635.22 FEET DURING BATHYMETRIC DATA COLLECTION REFERENCING SURVEY CONTROL SET BY GREENMAN-PEDERSEN INC.
 6. BACKGROUND IMAGERY WAS DOWNLOADED FROM THE NEW YORK STATE GIS WEB SITE AND SHOWN FOR REFERENCE PURPOSES ONLY.
 7. DRAIN LOCATIONS ARE APPROXIMATE AND SHOWN FOR REFERENCE PURPOSES ONLY.
 8. CONTOUR INTERVAL IS 1.0 FOOT WITH 5.0 FOOT MAJORS.
 9. BATHYMETRIC DATA WAS COLLECTED ON A BEST EFFORT BASIS WHILE SAFETY FOR THE CREW AND EQUIPMENT WAS CONSIDERED PRIORITY WHILE NAVIGATING AROUND OBSTRUCTIONS, SUCH AS DOCKS, SHALLOW AREAS, AND UNDERWATER STUMPS/PILINGS CONSIDERING THE TRANSDUCER DEPTH AND SURVEY VESSEL DRAFT.
 10. BATHYMETRIC DATA SET SHOWN IS REPRESENTATIVE OF A LARGER DATA SET.
 11. EQUIPMENT UTILIZED TO COLLECT BATHYMETRIC SURVEY DATA:
VESSEL: ASI CATSCAN
ECHO SOUNDER: ODOM HYDROTRAC
DGPS POSITIONING: TRIMBLE SPS461 (SUB-METER)
DATA COLLECTION SOFTWARE: HYPACK 2017



SCALE: 1 INCH = 100 FEET

N 886800

N 885800

REV#	DESCRIPTION	DATE	APPR.



SURVEYED BY: S. WAITE	FIELD BOOK(S): SCALE: 1" = 100'	DATE(S) OF SURVEY: 30 APRIL - 2 MAY 2018
DRAWN BY: S. WAITE	ASI MARINE L.P. JOB NO.: GU16-013	
CHECKED BY: C. JOHNSON	PLOT DATE: 12 NOV. 2018	DRAWING FILE NAME: LL 2018_COLOR_CONT_SHT1

APPROVED:	FIELD ENGINEER	DATE:
APPROVED:	CIVIL ENGINEERING TECHNICIAN	
APPROVED:	LEAD CARTOGRAPHER	
APPROVED:	CHIEF OF SURVEY	

Lime Lake Cottage Owners Association
LIME LAKE
MACHIAS, NEW YORK
SINGLE-BEAM BATHYMETRIC SURVEY
COLOR-FILLED CONTOURED BATHYMETRIC
PLAN VIEW

LIME LAKE COTTAGE OWNERS ASSOCIATION
LIME LAKE
MACHIAS, NEW YORK
SINGLE-BEAM BATHYMETRIC SURVEY
COLOR-FILLED CONTOURED BATHYMETRIC
PLAN VIEW

SHEET NUMBER:
1
SHEET 1 OF 3