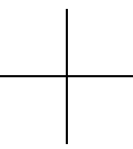




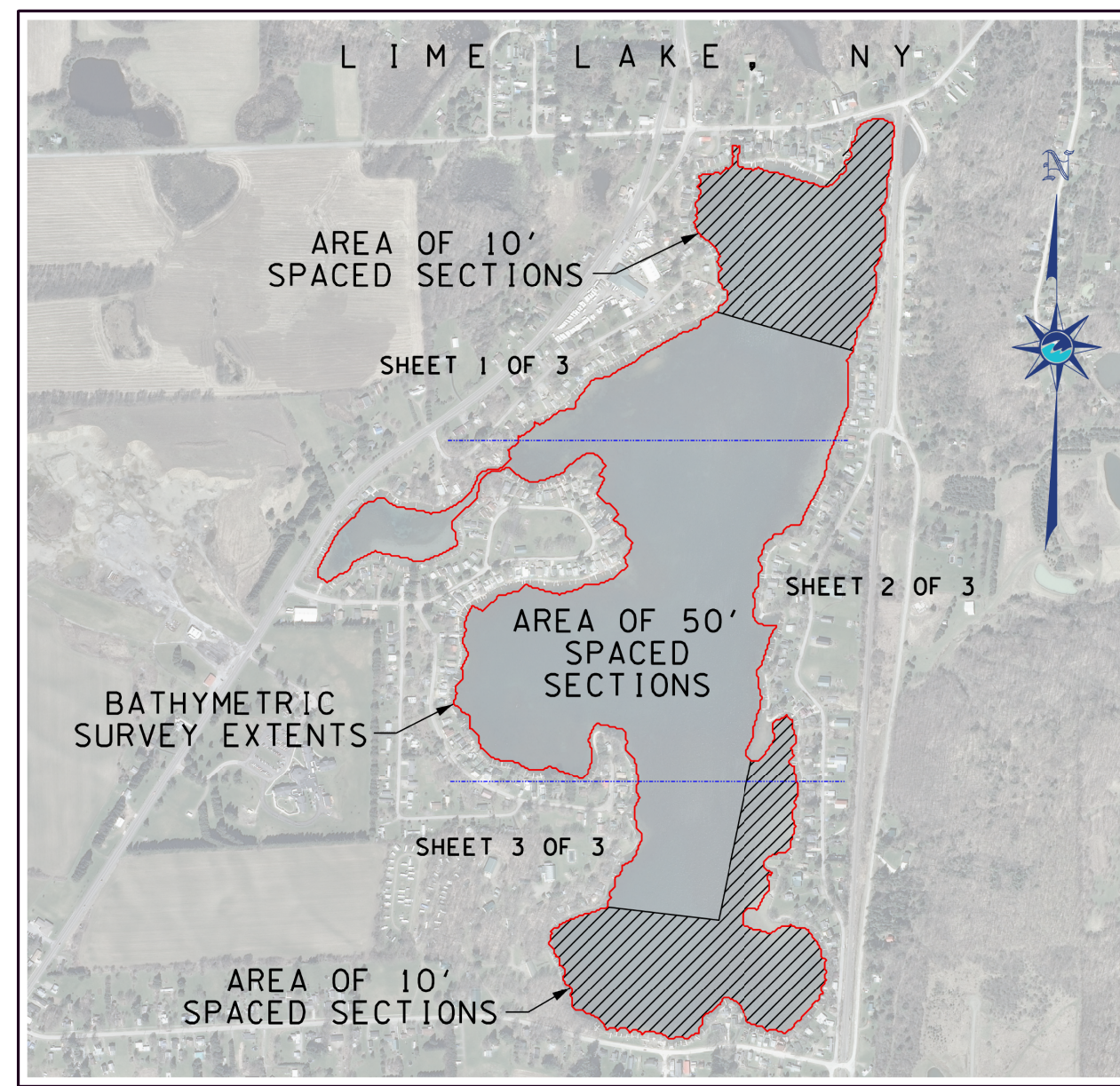
N 886800



E 1175600

E 117600

E 117600



LOCATION MAP
NOT TO SCALE

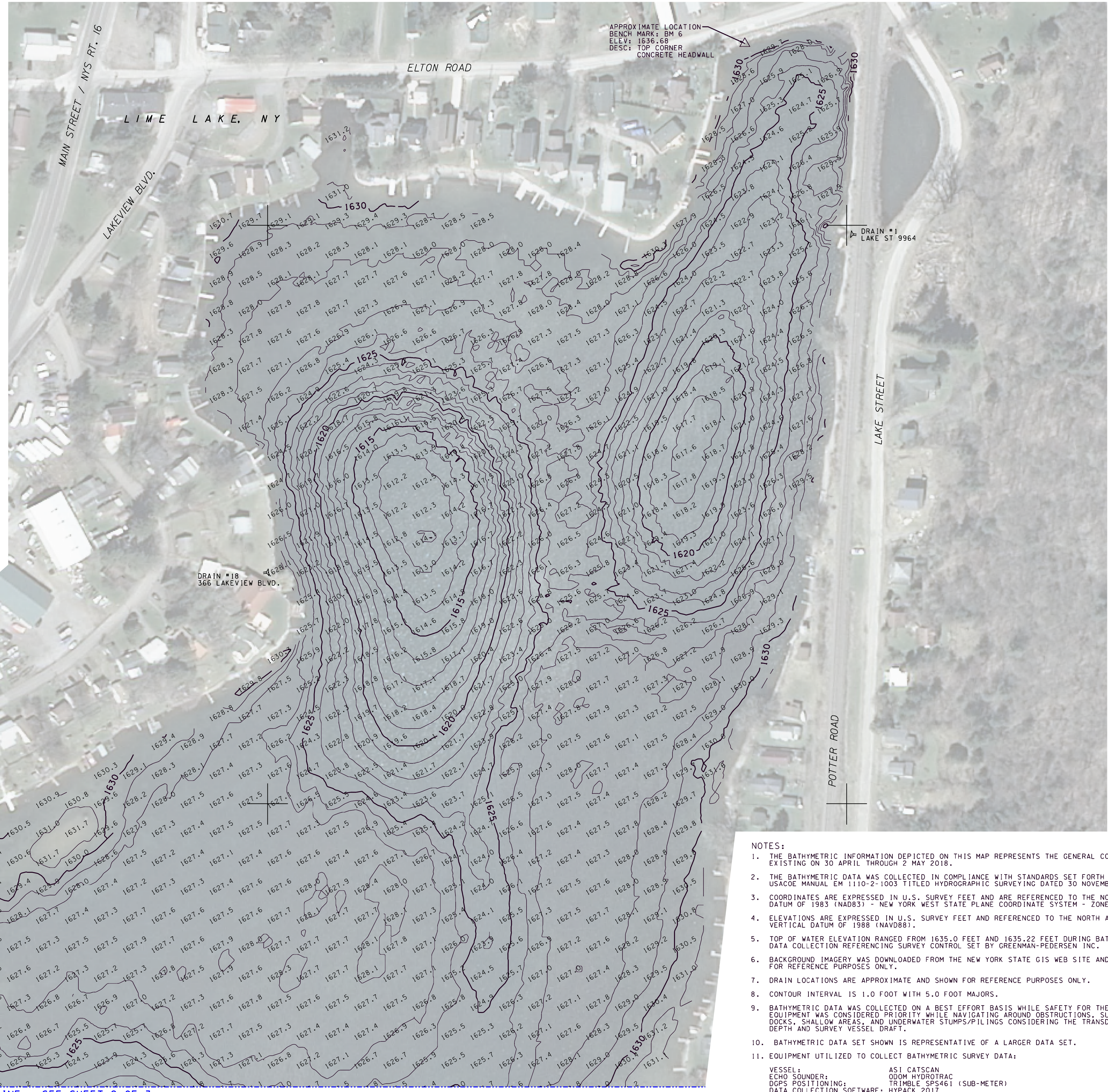
N 885800



E 1175600

E 117600

E 117600



MATCH LINE - SEE SHEET 2 OF 3

N 886800

N 885800

APPROXIMATE LOCATION
BENCH MARK: BM 6
ELEV: 1636.68
DESC: TOP CORNER
CONCRETE HEADWALL

DRAIN #1
LAKE ST 9964

DRAIN #18
366 LAKEVIEW BLVD.

DRAIN #17
343 LAKEVIEW BLVD.

- NOTES:
1. THE BATHYMETRIC INFORMATION DEPICTED ON THIS MAP REPRESENTS THE GENERAL CONDITION EXISTING ON 30 APRIL THROUGH 2 MAY 2018.
 2. THE BATHYMETRIC DATA WAS COLLECTED IN COMPLIANCE WITH STANDARDS SET FORTH IN USACOE MANUAL EM 1110-2-1003 TITLED HYDROGRAPHIC SURVEYING DATED 30 NOVEMBER 2013.
 3. COORDINATES ARE EXPRESSED IN U.S. SURVEY FEET AND ARE REFERENCED TO THE NORTH AMERICAN DATUM OF 1983 (NAD83) - NEW YORK WEST STATE PLANE COORDINATE SYSTEM - ZONE 3103.
 4. ELEVATIONS ARE EXPRESSED IN U.S. SURVEY FEET AND REFERENCED TO THE NORTH AMERICAN VERTICAL DATUM OF 1988 (NAVD88).
 5. TOP OF WATER ELEVATION RANGED FROM 1635.0 FEET AND 1635.22 FEET DURING BATHYMETRIC DATA COLLECTION REFERENCING SURVEY CONTROL SET BY GREENMAN-PEDERSEN INC.
 6. BACKGROUND IMAGERY WAS DOWNLOADED FROM THE NEW YORK STATE GIS WEB SITE AND SHOWN FOR REFERENCE PURPOSES ONLY.
 7. DRAIN LOCATIONS ARE APPROXIMATE AND SHOWN FOR REFERENCE PURPOSES ONLY.
 8. CONTOUR INTERVAL IS 1.0 FOOT WITH 5.0 FOOT MAJORS.
 9. BATHYMETRIC DATA WAS COLLECTED ON A BEST EFFORT BASIS WHILE SAFETY FOR THE CREW AND EQUIPMENT WAS CONSIDERED PRIORITY WHILE NAVIGATING AROUND OBSTRUCTIONS, SUCH AS DOCKS, SHALLOW AREAS, AND UNDERWATER STUMPS/PILINGS CONSIDERING THE TRANSDUCER DEPTH AND SURVEY VESSEL DRAFT.
 10. BATHYMETRIC DATA SET SHOWN IS REPRESENTATIVE OF A LARGER DATA SET.
 11. EQUIPMENT UTILIZED TO COLLECT BATHYMETRIC SURVEY DATA:
VESSEL: ASI CATSCAN
ECHO SOUNDER: ODOM HYDROTRAC
DGPS POSITIONING: TRIMBLE SPS461 (SUB-METER)
DATA COLLECTION SOFTWARE: HYPACK 2017



SCALE: 1 INCH = 100 FEET

REV.	DESCRIPTION	DATE	APPR.

ASI Marine	
30 APRIL - 2 MAY 2018	DATE(S) OF SURVEY:
ASI MARINE L.P. JOB NO.:	DRAWN BY:
GU16-013	S. WAITE
1" = 100'	SCALE:
30 APRIL - 2 MAY 2018	FIELD BOOK(S):
ILL 2018 CONTOURS_SHT1	DRAWING FILE NAME:
U. JOHNSON	CHECKED BY:
12 NOV. 2018	PLOT DATE:
	APPROVED:

	FIELD ENGINEER	
	CIVIL ENGINEERING TECHNICIAN	
	LEAD CARTOGRAPHER	
	CHIEF OF SURVEY	

	APPROVED:	
	APPROVED:	
	APPROVED:	
	DATE:	

LIME LAKE COTTAGE OWNERS ASSOCIATION
LIME LAKE
MACHIAS, NEW YORK
SINGLE-BEAM BATHYMETRIC SURVEY
CONTOURED BATHYMETRIC PLAN VIEW

SHEET NUMBER:
1
SHEET 1 OF 3